

Historic, Archive Document

Do not assume content reflects current scientific knowledge, policies, or practices.

62.91

LIBRARY
RECEIVED
★ APR 15 1948 ★
U. S. Department of Agriculture

SPRING 1948



STRANDER

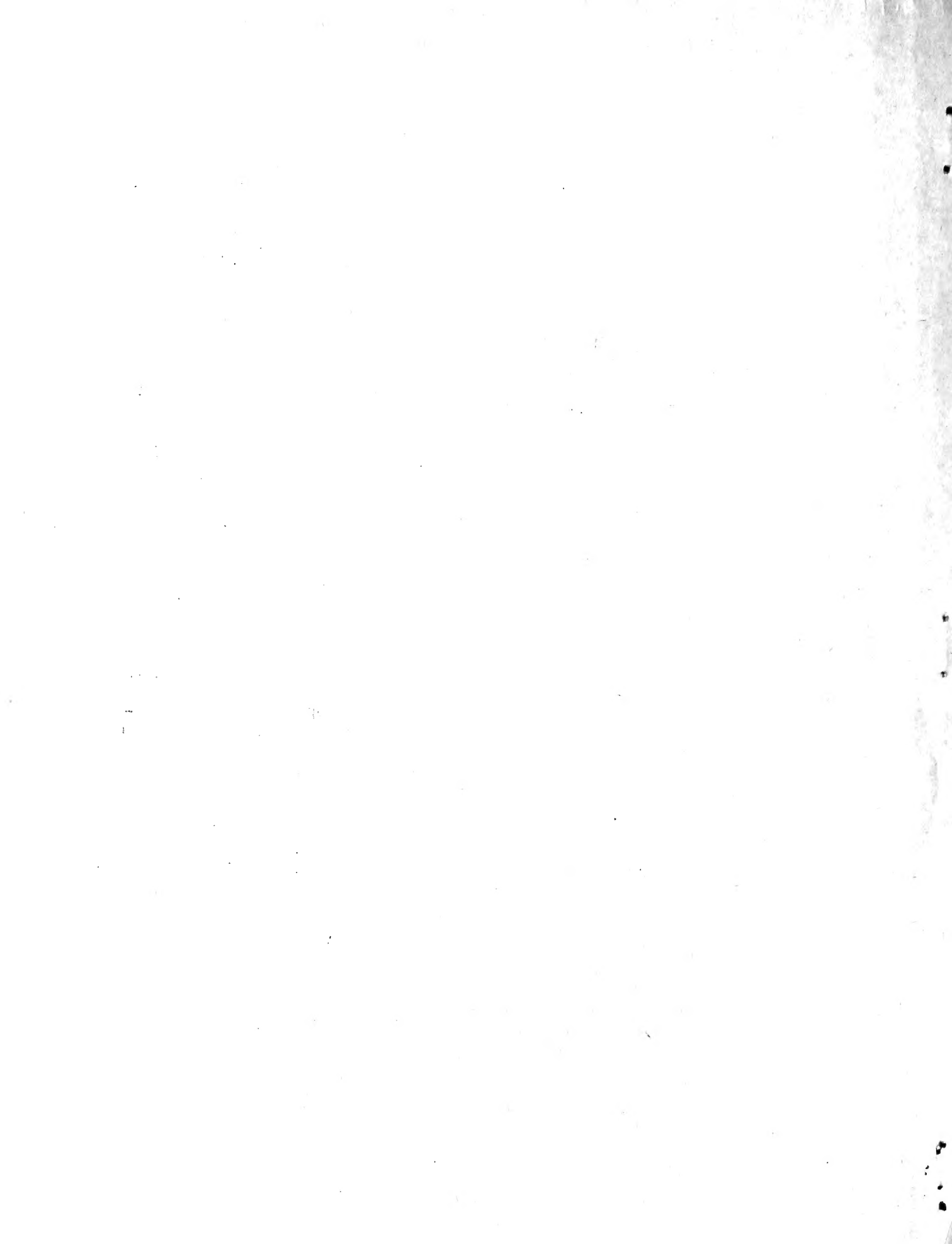
NURSERY
BOOK

&

CATALOG

STRANDER EVERGREEN
NURSERIES

3810 INTERURBAN SO. - SEATTLE 88



STRANDER

EVERGREEN NURSERIES
SEATTLE 38, WASHINGTON
13310 INTERURBAN SO.

SPRING 1948 NURSERY BOOK & CATALOG

This catalog becomes effective January 1, 1948
This catalog cancels all previous price quotations. This catalog
becomes obsolete June 15, 1948.

IMPORTANT ORDERING INSTRUCTIONS
will be found on the enclosed YELLOW pages.

SYMBOLS AND WORDS USED IN THIS CATALOG

(*) -- means the variety or size in question is not plentiful.
May we suggest that you order these particular plants
as early as possible, since we expect to be sold out
before the current season is over.

(x) -- means that the variety or specie in question appears on
the "Recommended Plant List" issued by the Washington
Society of Landscape Architects.

"Specimen" -- Although our plants are unconditionally guaranteed
to be as excellent, or better, than any to be found in
any other nursery; there sometimes appears a plant which
is so distinctly superior, so supremely characteristic
of the variety as to warrant a special classification
all of its own. We believe it no more than fair to call
these individuals "Specimens," there are none finer.

"Heavy" -- A plant with an unusually stout trunk and an unusually
dense covering of sturdy, well-formed branches.
In perennials "Heavy" refers to double- or triple-
sized divisions.

We are MEMBERS of:

WASHINGTON STATE NURSERYMEN'S ASSOCIATION
AMERICAN ASSOCIATION OF NURSERYMEN
ROYAL HORTICULTURAL SOCIETY OF GREAT BRITAIN

----- and many more.

CONIFERS

Cone-bearing, needle-leaved, woody shrubs and trees.

ABIES CONCOLOR (Concolor Fir) (*) (x)

Form is positive, pyramidal and dense. The long needles are softer and the color of the tree is more silvery-blue than the Blue Spruce. They never lose their lower branches, they have all the grandeur and hardiness of the Rocky Mountains, an excellent tree to be planted alone as a focal point of the garden.

STRANDER'S SELECT BLUE-FORM:

12 - 15 inches	\$ 2.00
15 - 18 inches	3.00
18 - 24 inches	4.00
24 - 30 inches	5.00

ARBORVITAE -- please see THUJA

ARAUCARIA ARAUCANA (imbricata) (*) MONKEY TREE

Even a monkey can't climb this one. Guaranteed dog-proof, cat-proof, and neighbor-proof. Every leaf ends in a needle-like prong. Perhaps the most interesting thing about this tree is its open, exotic branching habit. The overall appearance is that of a "missing link" from some bygone age. A definite accent tree.

12 - 15 inches	\$ 3.00
15 - 18 inches	4.00
18 - 24 inches	5.50
24 - 30 inches	7.00
30 - 36 inches	8.50

CEDRUS

CEDRUS ATLANTICA GLAUCA (*) BLUE ATLAS CEDAR

This true-cedar comes to us from the Atlas Mountains of North Africa. Known for its stiff, irregular, steel-blue branches. A splendid lawn tree, it should not be confused with the ordinary "Atlas Cedar."

6 - 8 feet specimens	\$ 15.00
8 - 10 feet specimens	\$ 20.00
10 - 12 feet specimens	35.00
12 - 14 feet specimens	50.00
14 - 18 feet specimens	75.00

CEDRUS DEODORA, SACRED DEODOR OF INDIA

The most popular of the true-cedars. Gracefully drooping branches, covered with long, soft, steel-blue needles. Pyramidal and positive in form, this tree has long been considered one of the outstanding accent evergreens. Specially beautiful when the lower branches are allowed to sweep out over the lawn. Known for its appearance of dignity and stability.

24 - 30 inches	\$ 3.50
30 - 36 inches	4.50
3 - 4 feet	5.00
4 - 5 feet	6.00
5 - 6 feet	7.00

specimens from 6 - 12 feet also available, priced from \$ 10.00 to \$35.00

CRYPTOMERIA

CRYPTOMERIA ELEGANS

An erect-growing evergreen with gray-blue foliage. The feather-like plumes of foliage are unlike that of any other conifer. Extremely compact, it can be sheared into any shape. Ideal for a formal planting.

3 - 4 feet	\$ 5.00
4 - 5 feet	6.50
5 - 6 feet	8.00

CRYPTOMERIA NANA GLOBOSA COMPACTA, DWARF CRYPTOMERIA

One of the dwarfest of the conifers. This little ball-shaped evergreen will hardly grow one half an inch a year. Can be used in the same manner as dwarf boxwood: for edging, in window boxes, in miniature rockeries. Very hardy and of easy culture. Foliage is green all summer, taking on a reddish tint during the winter. Recommended.

12 - 15 inches	\$ 2.00
----------------	---------

**STRANDER'S MAINTENANCE
MANUAL**

A compact handbook for Northwest Gardeners on how to KEEP their gardens beautiful the year-'round. Written by Northwest Nurserymen ... men who expect, and get, RESULTS with plants. Practical and up-to-the-minute.

postpaid 25¢, (a free copy included with every retail order for shrubs)

CYPRESS

Forms and species of CHAMAECYPARIS.

NOTE: Some botanists place RETINOSPORA forms in this same classification. We like to keep the two separate because the foliage is actually different.

BLUE CYPRESS, *C. Lawsoniana Allumii*, SCARAB CYPRESS
Very upright-growing blue-colored evergreen. Fine for plantings near large buildings, hedges, and screens. Keeps its blue color all year around. All sizes available from two to eight feet, priced per foot.

Any size, 2 - 8 feet, per foot: \$1.25

CRIP'S GOLDEN CYPRESS, *C. obtusa Crippsii*
An upright-growing evergreen with pale yellow leaves. The conspicuous flat sprays come out horizontally from the main trunk, making for an Oriental appearance. Very choice.

2 - 3 feet	4.00
3 - 4 feet	5.00
4 - 5 feet	6.00
5 - 6 feet	7.00
6 - 7 feet	8.00

DWARF BLUE CYPRESS (*) *C. Lawsoniana glauca minima*
One of the dwarfest conifers ever hybridized. This little blue evergreen will grow less than one half inch a year. Compact globe-form, admired by everyone who sees it. Very choice.

8 - 10 inches	2.00
10 - 12 inches	3.00
12 - 14 inches	4.00
14 - 16 inches	6.00
16 - 18 inches	8.00

ELWOOD'S CYPRESS (*) *C. Lawsoniana Ellwoodii*
Slow growing, very upright, with a feathery blue foliage. Fine for foundation plantings near small homes. One of the newest Cypress introductions, this form has already proved itself superior in many ways. Recommended.

30 - 36 inches	3.50
----------------	------

Cypresses con't on next page.

GLOBE CYPRESS (*) *C. Lawsoniana nidiformis*, NEST CYPRESS

A low, blue cypress, faster growing than the glauca minima but still dwarf. All the flat, soft branches radiate from one common center. Excellant along paths, informal enough for rockeries. Grows about twice as wide as high. The following measurements are of spread:

12 - 15 inches	‡ 2.00
15 - 18 inches	2.50
18 - 24 inches	3.00
24 - 30 inches	3.50
30 - 36 inches	5.00

GOLDEN LAWSON CYPRESS, *C. Lawsoniana aurea*

Grows in the same form as the ever-popular Lawson Cypress, the only difference being that this form has bright golden foliage. A large tree, fine for screening and background.

Any size, 6 - 12 feet, priced ‡ 5.00 up.

GREEN CYPRESS, *C. Lawsoniana erecta viridis*

An upright-growing, dense evergreen. Form is similar to the Blue Cypress, except that the foliage is a bright green. A neutral plant for screening, backgrounds, and massing.

2 - 3 feet	‡ 3.00
3 - 4 feet	4.50

LAWSON CYPRESS, *C. Lawsoniana*

A fast growing, upright evergreen, leaves are dark, blue-green. Branches tend to droop, making the plant unusually graceful.

Any size, 3 - 12 feet, per foot ‡1.00
Specimens, 3-12 feet, per foot ‡1.50

OBTUSA CYPRESS, *C. obtusa*, HINOKI CYPRESS, THUJA OBTUSA

The dark-green foliage on this slow-growing, very upright evergreen are borne on short branches which grow out horizontally from the main trunk. This is a narrow shrub, suitable for cramped quarters where spread is not desired. The general appearance is unusual and arresting. Ideal as an accent plant, at the corners of a home, or on either side of the doorway. Choice.

Any size, 2 - 10 feet, per foot ‡1.50

SILVER QUEEN CYPRESS (*) *C. Lawsoniana* "Silver Queen"

RARE. One of the most unusual forms of cypress to be found anywhere. Very upright in growth, extremely dense and compact, slow growing. The most unusual characteristic about this plant is its very light silvery-green foliage which does not darken during the winter months. Excellent accent plant, can be used in the same way as the Elwood's Cypress. Recommended.

3 - 4 feet	\$ 5.00
4 - 5 feet	6.00
5 - 6 feet	7.00

STEWART'S GOLDEN CYPRESS, *C. Lawsoniana Stewartii*, WINTERGOLDEN

A definite accent plant. Narrow, slow growing, it is excellent for cramped quarters. The foliage is bright golden during the summer, turning a little darker during the winter months. Very dense and compact, admired the year around by everyone who sees it. Choice.

2 - 3 feet	\$ 2.00
3 - 4 feet	3.00
4 - 5 feet	4.00
5 - 6 feet	5.00
6 - 7 feet	6.00
7 - 8 feet	7.00

YELLOW THREADLEAF CYPRESS, *C. pisifera filifera aurea nana* (*)

The leaves on this little globe-shaped evergreen are formed like long golden strings. Never grows large, ideal to brighten-up a corner along the garden path, or as a most-unusual foundation plant. Can be placed in a rockery in such a manner that some of the threads hang over the nearby rocks. Sizes are measured by spread:

18 - 24 inches	\$ 3.50
24 - 30 inches	5.00

HIBA ARBORVITAE, please see *Thujaopsis*

Information concerning our FREE DELIVERY SERVICE, how to order, our guarantee, how to reach our nurseries, etc. will be found on the enclosed YELLOW SHEET

WISSEL' CYPRESS, *C. Lawsoniana wisseli*

RARE. Upright, slow growing, dark-blue evergreen. The foliage is unusually interesting in that it grows in twisted tufts, each branch looks like a "living corkscrew." Arresting as a foundation plant at the corners of a house.

3 - 4 feet	‡ 5.00
4 - 5 feet	6.50
5 - 6 feet	8.00
6 - 7 feet	9.50

JUNIPERS

Species and forms of JUNIPERUS

CANAERT'S JUNIPER (*) *J. virginiana Canaertii*

Has an extremely rich, dark-green foliage, heavily tufted. Grows upright in a loose, informal, pyramidal form. Fine for foundation plantings or as a moderately high background shrub.

3 - 4 feet	‡ 5.00
------------	--------

DWARF IRISH JUNIPER (*) *J. communis hibernica nana*

VERY RARE! This tiny replica of the popular Irish Juniper grows less than an inch a year. Light blue-green foliage, upright and dense. A collector's item, fine along paths or in tiny nooks. Choice.

15 - 18 inches	‡ 2.50
----------------	--------

GOLD TIP PROSTRATE JUNIPER (*) *J. chinensis procumbans aurea-var.*

GOLDEN VARIEGATED PROCUMBANS JUNIPER. Dwarf, very low, creeping evergreen with splotches of gold throughout the foliage. Never grows over six inches high, a rockery favorite. Admired by everyone who sees it. The sizes are measured by spread:

20 - 24 inches	‡ 4.00
----------------	--------

IRISH JUNIPER, STRANDER'S SELECTED AND IMPROVED "COMPACTA FAST-IGIATA" SPECIMEN STRAIN.

Please do not confuse special-dense, special-compact Irish Junipers with the "ordinary" type. This form, originated in our nurseries, grows slower and requires less shearing, it is guaranteed superior. A neat, columnular evergreen for foundation planting.

3 - 4 feet	‡ 3.00
4 - 5 feet	4.00
5 - 6 feet	5.00
6 - 7 feet	7.50

MEYER'S JUNIPER (*) *J. squamata meyeri*

A bright blue evergreen of irregular growth. Originally found in China and recently introduced to this country by Frank N. Meyer. It makes a peculiar bunchy growth and is distinct in its unusual coloring. The leaves are plump, pointed, and prickly, and of a bright, shiny, blue color. An accent plant.

18 - 24 inches	\$ 2.50
24 - 30 inches	3.50
30 - 36 inches	5.00

PHITZER'S JUNIPER (*) *J. chinensis Pfitzeriana*

A semi-prostrate evergreen. Medium-fast growing, foliage is dark green. One of the most popular shrubs for low foundation plantings or for "Facing" larger shrubs. The sizes are measured by spread:

18 - 24 inches	\$ 2.50
24 - 30 inches	4.50
3 - 4 feet, specimens	6.50

PROSTRATE TAM JUNIPER (*) *J. Sabina tamariscifolia* TAMARIX JUNIPER

Extremely low, prostrate, and spreading. Slow growing, dark-green foliage. Ideal along garden paths or in the rockery. Recommended. Sizes by spread:

12 - 15 inches	\$ 2.00
15 - 18 inches	3.00

SAVIN JUNIPER (*) *J. Sabina variegata*, SILVER TIP SAVIN JUNIPER

Low, spreading, vase-shaped shrub. The foliage is dark green, flecked with creamy white. Excellent for low foundation plantings, along garden paths, or in the rockery. Sizes are measured by spread:

24 - 30 inches	\$ 4.00
30 - 36 inches	5.00

SCOULOSA JUNIPER (*) *J. scoulosa*

RARE. One of the finest of the upright Junipers. Habit of growth is similar to the *Sylvestris* *J.* Distinct because of its smooth (juvenile), light green foliage, borne in tufts and bunches. Highly recommended, beautiful, slow growing. Fine for doorway and foundation planting.

18 - 24 inches	\$ 2.00
24 - 30 inches	3.50
30 - 36 inches	5.00

SILVER TIP PROSTRATE JUNIPER (*) *J. chinensis procumbans alba* var.
 Exactly like the "Gold Tip Prostrate Juniper," except
 the markings in this case are silvery-white. Sizes
 measured by spread:

20 - 24 inches	\$ 3.50
24 - 30 inches	5.00

SPINY GREEK BLUE JUNIPER, *J. chinensis*, CHINESE JUNIPER
 Very dense and compact, grows in a formal pyramidal
 shape. Medium-slow growing, foliage a bright blue.
 Specially nice in a formal garden, or a foundation
 planting. An accent shrub, stands shearing and
 trimming into any shape.

24 - 30 inches	\$ 4.00
30 - 36 inches	5.00
3 - 4 feet	6.00
4 - 5 feet	7.00

SYLVESTRIS JUNIPER, *J. femina*

An upright evergreen, growing in a loose, informal
 pyramidal, picturesque shape. When untrimmed this
 shrub has a feathery appearance. Excellent for found-
 ation plantings, in groups in front of background
 trees, or doorways. Tough, it can stand city cond-
 itions. Foliage is dark blue-green.

30 - 36 inches	\$ 3.00
36 - 42 inches	4.50
42 - 50 inches	6.00
50 - 60 inches	7.50
60 - 72 inches	9.00

Trimmed specimens of the Sylvestris Juniper are
 also available. When heavily sheared this shrub
 takes on much more formal appearance, a definite
 accent shrub.

30 - 36 inches	\$ 7.00
----------------	---------

VARIEGATED SPINY GREEK JUNIPER, *J. chinensis variegata*

Similar to the Blue Spiny Greek Juniper, except
 that the habit of growth is more picturesque and
 some of the tufts of foliage are creamy white.

24 - 30 inches	\$ 3.00
30 - 36 inches	4.00
3 - 4 feet	5.00
4 - 5 feet	6.00

RETINOSPORA

A Horticultural name, considered a misnomer by some taxonomists. Technically these plants should appear under CHAMAECYPARIS (obtusata and pisifera forms). Since the foliage is superficially different from the False-cypress we prefer to separate the two.

RETINOSPORA COMPACTA NANA AUREA, STRANDER'S DWARF GOLD RETINOSPORA
 LAKE. A very dwarf, golden-colored evergreen. This strain was originated in our nurseries, we recommend it as superior. Grows into a tiny feathery, globe-shaped plant. Can be used in the same manner as dwarf boxwood, for edging, along garden paths, anywhere a dwarf plant is desired.

8 - 10 inches	\$ 2.00
10 - 12 inches	2.50
12 - 15 inches	3.00
15 - 18 inches	3.50

RETINOSPORA PLUMOSA, PLUME RETINOSPORA
 an upright, dense, compact evergreen with plume-like green foliage all year around. Sold by the foot.

any size, from 4 to 9 feet, per foot \$ 1.00

RETINOSPORA PLUMOSA AUREA, GOLDEN PLUME RETINOSPORA
 an upright, dense, compact evergreen with plume-like golden foliage all year around. Similar in habit to the green form, except that this shrub grows much slower.

2 - 3 feet	\$ 3.00
3 - 4 feet	4.00
4 - 5 feet	5.00
5 - 6 feet	6.00

RETINOSPORA PLUMOSA SPICATA
 A variegated form of the popular plume Retinospora. Has splotches of silvery-white leaves in the foliage. Grows upright, fine for foundation plantings. Recommended.

24 - 30 inches	\$ 3.00
30 - 36 inches	4.00

RETINOSPORA SQUAROSA VEITCHI

Similar in habit to the plume retinospora, the foliage color is a beautiful gray-blue. Fine for foundation plantings.

3 - 4 feet	\$ 4.00
4 - 5 feet	5.50
5 - 6 feet	7.00

SPRUCE

Species and forms of PICEA

COLORADO BLUE SPRUCE, *Picea pungens glauca* (*)

The tree that everyone wants. Perhaps the most beautiful and most popular conifer ever grown. A graceful, slow-growing, pyramidal, specimen tree. The branches come out horizontally from the main trunk in graceful, cascading layers. Beautiful specimens of the Colorado Blue Spruce become the focal point of the whole garden. Used as a lawn tree, or at the end of a vista. Three types available at STRANDER'S:

STRANDER'S SELECTED SPECIMEN-BLUE SHINERS.

The bluest of the blue, there are no finer Blue Spruces available. The foliage is actually a light Mediterranean blue.

Any size, from 2 to 5 feet, per foot \$ 3.00

REGULAR BLUE SPRUCE. The color tends to be more blue-green.

Any size, from 2 to 5 feet, per foot \$ 2.00

GREEN SPRUCE. While not outstanding in color, these trees still make beautiful screens and background plantings.

Any size, from 2 to 5 feet, per foot \$ 1.00

GIFT CERTIFICATES

American Association of Nurserymen GIFT CERTIFICATES are redeemable at over 1,100 of the better nurseries from coast to coast. They may be purchased in any amount, from \$ 5.00 and up. It is now possible to send anything from a single little evergreen to an entire orchard by mail. Give your friends a lasting gift of beauty, a gift that increases in value every year. These gift certificates are issued and honored by us. STRANDER EVERGREEN NURSERIES.

THUJA

The ARBORVITAE, species and forms of THUJA

BERKMANN'S GOLDEN DWARF ARBORVITAE (*) *T. orientalis aurea nana*
A true dwarf evergreen, very compact. The form is upright pyramidal. The foliage is a bright golden color all year around. Excellant for edging, along garden paths, and where space is limited.

10 - 12 inches	\$ 2.00
12 - 15 inches	3.00

BEVERLY GOLDEN ARBORVITAE (*) *T. orientalis beverlyensis*
A slow-growing, golden, upright evergreen. Narrow and columnular in growth. Used as accent plants or as medium-tall foundation plants. Chioce.

18 - 24 inches	\$ 2.50
2 - 3 feet	3.50
3 - 4 feet	5.00
4 - 5 feet	6.50
5 - 6 feet	8.00
6 - 7 feet specimens	10.00

CRIPPSI, please see CYPRESS

ELK-HORN ARBORVITAE, please see THUJOPSIS

FALSE ARBORVITAE, please see THUJOPSIS

GLOBE ARBORVITAE, *T. orientalis globosa*

This dwarf evergreen grows into the form of a perfect little ball without shearing. Foliage consists of bright green flat sprays. A fine neutral shrub for facing taller plants or for use in foundation plantings. Hardy and tough.

18 - 24 inches	\$ 3.50
24 - 30 inches	5.00
larger sizes available	

OBTUSA ARBORVITAE, please see CYPRESS

ORIENTAL ARBORVITAE, *T. "biota" orientalis*, CHINESE ARBORVITAE
An upright, columnular, dark-green, medium-fast growing evergreen. The flat-spray foliage is unusual and slightly twisting. Excellant for higher corner plantings, hedging, screening, and background planting.

3 - 4 feet	\$ 2.50
4 - 5 feet	3.50
5 - 6 feet	5.00

PYRAMIDAL ARBORVITAE, *T. occidentalis pyramidalis*
 Perhaps the most popular of the columnar-upright evergreens. This fine medium-slow growing tree is tough, hardy, and trouble free. For corner plantings near large houses and industrial plants, for beautiful hedges and screens. The medium-dark green foliage blends with any grouping, it will grow compact and dense without shearing of any kind. Can be held at any desired height by simply cutting the top off at regular yearly intervals. Sold by the foot:

Any size, from 2 to 12 feet, per foot ϕ 1.25

THUJOPSIS, *Thujaopsis dolabrata*, FALSE ARBORVITAE, ELK-HORN ARBOR.
 A globe-shaped slow-growing medium green little evergreen. Very unusual, always attracts attention. The foliage is similar to the regular Arborvitae, except that it is a little more coarse. For foundation plantings, along garden paths, in the rockery.

12 - 15 inches	ϕ 1.00
15 - 18 inches	1.50
18 - 24 inches	2.00
24 - 30 inches specimens	5.00
larger sizes available	

OUR DESIGN SERVICE

FROM OUR LANDSCAPE DEPT.

A new service for our customers. Our college-trained, fully qualified Landscape Architect will be glad to solve your problems of garden design. We are prepared to create designs for any kind of an installation, from a tiny dooryard to a city division. We prepare legible blueprints and perspective drawings showing the name and size of every plant needed. Avoid overplanting, unsuited plant relations, or the wrong varieties for your particular situation. Reasonable rates, every dollar spent for this service will bring the home owner ten dollars in increased enjoyment, more usable facilities, and a more beautiful garden. Contemporary-Northwest style of design a specialty.

Please note: We do not do any actual construction work or planting. We supply the plants and the plan. We are always glad to supply, upon request, the names and addresses of competent Landscape-Construction men and gardeners in your district. There is no charge for this service.

YEWS

Species and forms of TAXUS

ENGLISH YEW, *T. baccata*

An upright-growing pyramidal evergreen. The foliage is very dark green, can be sheared into any form, ideal for topiary work. Used in foundation plantings, as accent plants, or as screens and hedges. Slow growing.

24 - 30 inches	\$ 3.00
30 - 36 inches	4.50
3 - 4 feet	6.00
4 - 5 feet	7.50
5 - 6 feet	9.00

GOLDEN IRISH YEW (*) *T. canadensis fastigiata aurea*

One of the most beautiful of all evergreens. The foliage is bright golden all year around. This unusual shrub grows very narrow and columnar, specimens six feet high are scarcely more than eight inches in diameter. Extremely slow growing, ideal for foundation plantings or as accent plants. Choice. Sold by the foot:

Any size, from 2 to 4 feet, per foot \$2.00

GREEN IRISH YEW, *T. canadensis fastigiata*

Identical to the Golden Irish Yew listed above, except that the foliage in this case is very dark green. Choice. Sold by the foot:

Any size, from 2 to 4 feet, per foot \$ 2.00

STRANDER'S SILVER-TIP IRISH YEW, *T. canadensis fastigiata alba-var.*

An exceptionally fine form of the Irish Yew which was originated at our nurseries. Similar to the regular Irish Yew, except in this case the foliage is tipped with silver, the plant tends to be a bit more bushy, and the rate of growth is slightly faster. Very upright. Choice. Sold by the foot:

Any size, from 2 to 5 feet, per foot \$ 1.50

PODOCARPUS YEW, please see PODOCARPUS

SPREADING JAPANESE YEW (*) *T. cuspidata* sp. VASE YEW

An interesting prostrate, slow-growing, dark-green evergreen. Form of growth is similar to the Phitzer's Juniper. An ideal low foundation plant, or in front of taller shrubs. Sizes measured by spread:

24 - 30 inches	\$ 4.00
----------------	---------

VINES and GROUNDCOVERS

CELASTRUS SCANDENS. (*) BITTERSWEET VINE

The bright orange berries on this beautiful and unusual vine are in conspicuous terminal clusters. The berries remain on the plant all winter. Deciduous, the leaves color-up to a golden yellow in the fall. White flowers. Vigorous grower, very hardy. May be used as a groundcover, or vine.

2 year plants	\$ 1.50
2 year plants, heavy	2.00

DWARF GROUND IVY, not really a vine. Actually a very-dwarf rockery plant. Choice. Please see "FLOWERING SHRUBS"

HALL'S HONEYSUCKLE (*) Lonicera japonica Halliana

A profusely blooming evergreen (in the Puget Sound region) vine. The abundant white flowers fade to yellow in the sunlight, creating an arresting combination of both white and yellow flowers on the same plant at the same time. Recommended both as a climber and a groundcover.

2 year plants	\$ 6.00 a dozen
6 year, heavy plants	\$ 1.50 each

PYRACANTHA, the beautiful red-berried FIRETHORN plant. Sometimes trained as a vine. Please see "FLOWERING SHRUBS"

WISTERIA (*)

The finest spring-blooming vine with lavender flowers in hanging clusters at lilac time. The form is loose and billowy.

2 year plants	\$ 1.50
2 year heavy plants	2.00

Important ordering instructions, our guarantee, how to get to the nursery, and information concerning our FREE DELIVERY SERVICE will be found on the enclosed YELLOW SHEET.

BEAUTIFUL 17 FLOWERING SHRUBS

ABELIA "EDWARD GOUCHER" (*)

NEW. The newest and best Abelia. A broad-leaved evergreen, more dwarf and bearing darker-pink blossoms in greater profusion than the ordinary form. Choice, recommended.

18 - 24 inches \$ 3.00

AUCUBA, GOLD DUST PLANT, A. japonica var. variegata

One of the best and most ornamental evergreen shrubs for planting in the shade. Large, broad, dark-green leaves flecked with gold.

15 - 18 inches	\$ 2.00
18 - 24 inches	3.00
24 - 30 inches	4.00
30 - 36 inches	5.00
3 - 4 feet	6.50
4 - 5 feet	8.00

larger sizes available

AZALEAS

BINODEGIRI

A pink, evergreen, Kurume hybrid.

\$ 2.00 up

HINODEGIRI

A bright-red, Evergreen, Kurume hybrid.

\$ 2.00 up

MOLLIS

The ever popular flame-orange colored deciduous Chinese Azalea. When in flower this is one of the most striking of all the flowering shrubs.

8 - 10 inches	\$ 1.00
10 - 12 inches	1.50
12 - 15 inches	1.75
15 - 18 inches	2.00
18 - 24 inches	2.50

PINK PEARL

A wonderful shell-pink evergreen.

\$ 2.00 up

AZALEAS con't on next page

AZALEAS, con't.

- SNOW (*) Pure white, profusely flowering evergreen \$ 2.00 up
- WARD'S RUBY (*) The sensational NEW bright red evergreen. Choice. \$ 2.00 up
- ZAMPA (*) RARE, NEW strawberry-red. \$ 1.00 up

BARBERRY

Species and forms of BERBERIS

BERBERIS DULCIS NANA
A dense, dwarf, and compact evergreen Barberry, fine for low hedges and foundation plantings.

8 - 10 inches	\$.75
10 - 12 inches	1.00
12 - 15 inches	1.50

MAGELLAN BARBERRY, B. buxifolia

An evergreen shrub growing to ten feet if not trimmed. Bears dark purple fruits. Fine for screens or hedges.

18 - 24 inches	\$ 3.50
2 - 3 feet	6.00

RED LEAFED BARBERRY (*)

A fine accent shrub, the red-colored leaves are outstanding. Deciduous, free-growing. Ideal for massing, screening, or hedging.

18 - 24 inches	\$ 1.50
5 - 6 feet specimens	5.00

TRIPLOFOLIA BARBERRY (*)

An evergreen, spreading and bushy in form, foliage is green. Choice for massing, as a neutral plant, for foundation plantings.

15 - 18 inches	\$ 2.50
----------------	---------

BOXWOOD

Species and forms of BUXUS

BIGLEAF HEDGE-BOX, BIGLEAF TREE-BOX

A extremely compact broadleaved evergreen for medium-high hedges, screens, topiary work, or as an accent plant. Can be sheared into any form. Tough and hardy.

2 - 3 feet	\$ 4.00
3 - 4 feet	5.00

DWARF BOXWOOD, *B. sempervirens suffruticosa*

Form is rounded and dense. Color dark, texture very fine. This plant is greatly appreciated partly because of its long association with old gardens and dooryards but mainly for its own intrinsic values. These values are slow growth which makes it almost as permanent as a piece of stone, dark color which gives it a rich appearance and fine texture which added to denseness and a soft undulating surface produces a dignity and character that no other garden plant possesses. Recommended.

6 - 8 inches (*)	\$.50
8 - 10 inches	1.00
10 - 12 inches	2.00

GOLDEN BOXWOOD

Similar to the two tree-box varieties, except that in this plant the leaves are variegated with areas of bright gold. A focal point plant, unusual, recommended. Grows slightly slower than the regular tree-box.

15 - 18 inches	\$ 1.50
18 - 24 inches	3.50
24 - 30 inches	5.00

LITTLELEAF HEDGE-BOX

Similar to the Bigleaf Hedge-Box, except that the leaves are much tinier, giving the plant an overall finer texture.

15 - 18 inches	\$ 1.50
18 - 24 inches	2.00

SILVERLEAF BOX (*)

A compact, slow growing, low evergreen. Arresting in appearance because each leaf has a white line around its edge. Overall color is light green. Measured by spread:

18 - 24 inches spread	\$ 4.00
-----------------------	---------

CAMELLIAS

The following is only a partial list. We have many other kinds in too small quantities to warrant listing. New varieties will be arriving weekly throughout the spring, visit our nurseries and review our selection.

- BELLA ROMANA (*)
Stripped deep-pink and white, profuse bloomer.
Choice \$ 2.50 up
- ELENA NOBILE (*)
Excellent dark, rich red. Choice. \$ 2.50 up
- ELLA DRAYTON (*)
RARE. Bright red double flowers. Choice. \$ 2.50 up
- JULIA DRAYTON (*) also called PURPLE EMPEROR
RARE, with large pink-red blossoms. Choice. \$ 2.50 up
- PRINCESS BACCIOCHI (*)
RARE. Fiery-red with gold-yellow stamens.
Unusual and choice. \$ 2.50 up
- PURITY (*)
The ever-popular large white. \$ 2.00 up
- PINK PERFECTION (*)
The ever-popular brilliant pink. \$ 2.00 up

COTONEASTER

DIEL'S COTONEASTER (*) C. Dielsiana
RARE. Offered for the first time by any nurseryman in the Pacific Northwest. Oblong-pointed leaves to one inch long, pinkish-white blossoms in the spring, fire-red berries. Deciduous, the leaves color-up to a rich-red in the fall. Gracefully pendulous soft branches. Admired by everyone who sees it.

24 - 30 inch spread \$ 3.00
30 - 36 inch spread 4.00

HENRYANA (*) C. Henryana
RARE. This beautiful evergreen shrub can be trained into a spreading or an upright form. Of open habit, the large clusters of small, red berries light the garden up like a beacon during the winter months. Recommended.

Prostrate form, heavy plants \$ 5.00 up
Upright form (to 6 feet) \$ 10.00 up

MICROPHYLLA (*) *C. microphylla*

A low, prostrate, slow-growing evergreen. The leaves are very dark green all year around. The berries are dark red, conspicuous and remaining on all winter. Choice. Ideal for rock gardens.

15 - 18 inches spread \$ 2.00

ROCKSPRAY, *C. horizontalis*

This low, prostrate, deciduous shrub has leaves that color-up to a beautiful red in the fall. The large clusters of red berries remain on all winter. Sizes measured by spread:

2 - 3 feet spread \$ 3.50
3 - 4 feet spread 5.00

CHOISYA TERNATA (*) MEXICAN FALSE ORANGE

A fine, soft-appearing broadleaved evergreen for shady places. Foliage appears very lush. Leaves and flowers have an orange-like odor. White flowers in the spring. Recommended.

15 - 18 inches \$ 2.00
18 - 24 inches 2.50

DAPHNE

DAPHNE CNEORUM (*)

Dwarf, spreading evergreen. The plants are covered with pink blossoms in the spring. One of the finest rock garden plants. Measured by spread:

6 - 8 inches \$.75
8 - 14 inches 1.50
14 - 18 inches 2.00

FEBRUARY DAPHNE (*) *D. mezereum*

One of the first plants to bloom in the spring. A deciduous, upright-growing shrub, the flowers come out before the leaves. Profuse bloomer, deep pink blossoms. Choice.

18 - 24 inches \$ 2.00
24 - 30 inches 3.00

Daphnes con't.

FLOWERING SHRUBS

DAPHNE ODORA (*) WINTER DAPHNE

Waxy evergreen leaves, sweet-scented light pink flowers in the early spring. Likes a semi-shaded environment. Blossoms are borne in round clusters. Choice.

8 - 12 inches	\$ 1.50
12 - 15 inches	2.00

ENKIANTHUS (*)

A fine deciduous shrub with beautiful hanging pink flowers in the spring. The leaves color-up in the fall.

3 - 4 feet	\$ 3.00
4 - 5 feet	4.50
5 - 6 feet	6.00

EUONYMUS

EUONYMUS JAPONICUS (*)

A broadleaved evergreen with dark-green shiny leaves. Neutral in appearance, fine for foundation planting, or for low hedges. Recommended.

2 - 3 feet	\$ 2.50
3 - 4 feet	3.50

EUONYMUS JAPONICUS COMPACTUS VARIEGATUS (*)

Slower growing than the plant listed above. Also, this fine shrub has variegated bright golden leaves. Striking in appearance, unusual.

18 - 24 inches	\$ 2.50
----------------	---------

EUONYMUS MAACKII (*)

RARE. Offered for the first time by any nurseryman in the Pacific Northwest. A medium-fast growing semi-evergreen with soft green large leaves and a most graceful branching habit. Very lush and informal looking. Ideal as a background for accent plants or in a naturalistic garden. Fruit is pink. A native of Korea.

2 - 3 feet	\$ 2.00
3 - 4 feet	3.00
4 - 5 feet	4.00
heavy specimens available	5.00 up

FORSYTHIA FORTUNEI, GOLDEN BELL SHRUB

A graceful, open-growing, upright deciduous shrub. Arresting when in flower. Fairly smothered with golden-yellow blossoms in the very early spring, before even the leaves appear. Recommended. Tough and hardy.

3 - 4 feet	\$ 1.50
4 - 5 feet	2.00
larger sizes and specimens available.	

HEATHERS

CARNEA (*) RED WINTER FLOWERING HEATHER.

Low, compact, dense, creeping. Bright red flowers in winter. A rockery gem. Measured by spread:

6 - 8 inch spread	\$ 1.00
10 - 12 inch spread	2.00

MEDITERRANEAN HYBRID HEATHER

The most popular heather. Low, compact, dense, creeping. Lavender-pink blossoms cover the plant all winter. Choice. Ideal for rockery. Measured by spread:

12 - 14 inches spread	\$ 1.00
14 - 16 inches spread	1.50
16 - 20 inches spread	2.00
20 - 24 inches spread	2.50
24 - 30 inches spread	3.00

MRS. MAXWELL HEATHER (*)

Low, compact, dense, creeping. Red flowers, ideal for the rockery. Arresting when in flower. Sizes measured by spread:

6 - 8 inches spread	\$ 1.00
---------------------	---------

HOLLY

Species and forms of ILEX.

Note: this is not a complete list, specimens of other varieties available.

BERRIED ENGLISH HOLLY (*)

Dark-green glossy evergreen leaves. Guaranteed berried.

3 - 4 feet specimens	\$ 5.00
4 - 5 feet specimens	7.50
6 - 8 feet specimens	10.00

Hollies con't.

VARIEGATED ENGLISH HOLLY (*)

Slower growing than the regular English Holly.
Each leaf is shot with bright gold, a most unusual
accent shrub. Evergreen. Choice.

2 - 3 feet	\$ 5.00
3 - 4 feet	6.50
4 - 5 feet	8.00
5 - 6 feet	9.50

HYDRANGEA PANICULATA GRANDIFLORA (*) P.G. HYDRANGEA

Large pink or blue clusters of flowers during
the summer, bright green leaves. Very showy.

18 - 24 inches	\$ 1.50
18 - 24 inches, heavy	2.00
larger specimens available	

IVY (*) DWARF ROCK GARDEN IVY, form of Hedera helix

This RARE little plant is not a vine. The tiny
bright-green evergreen leaves are borne on short
little stems that grow less than an inch a year.
Compact, dense, very low. One of the most unusual
rock garden plants we have ever seen. Sizes are
measured by spread:

12 - 15 inches spread	\$ 3.00
15 - 18 inches spread	4.00

KALMIA, please see LAUREL

LAUREL

ENGLISH LAUREL

The ever-popular broadleaved evergreen hedge and
screen plant. Can be sheared into any form, tough,
stands abuse and city conditions.

18 - 24 inches	\$ 1.00
24 - 30 inches	1.50

MOUNTAIN LAUREL (*) Kalmia latifolia

A slow-growing broadleaved evergreen. A cousin
to the Rhododendron. Medium-dark green leaves,
light pink conspicuous flowers. Excellent for
grouping with Rhododendrons and Azaleas. Choice.

12 - 15 inches	\$ 2.50
15 - 18 inches	3.50

Laurels con't on next page.

PORTUGAL LAUREL

A compact-growing broadleaved evergreen. Leaves glossy green, stems bright red. A fine and unusual shrub for larger foundation plantings, grouping with other broadleaved evergreens, or as a low hedge. Recommended.

18 - 24 inches	\$ 2.50
24 - 30 inches	3.50
30 - 36 inches	5.00

LAURESTINUS (*) *Viburnum tinus*

One of the only shrubs to bear flowers all winter. Beautiful white blossoms in profusion from October to February. A broadleaved evergreen, grows round, dense, and compact. Fine for foundation planting or grouping. Recommended.

12 - 15 inches	\$ 1.50
18 - 24 inches	2.50
24 - 30 inches	3.50

MAGNOLIA

GIANT-FLOWERED MAGNOLIA, *M. macropylla*

UNUSUAL. Flowers up to one foot in diameter. A choice deciduous tree with elephant-ear leaves and gigantic white flowers. Lush in appearance, ideal background or shade trees. Choice.

6 - 8 feet	\$ 6.00
8 - 10 feet specimens	10.00
10 - 12 feet specimens	15.00
larger specimens available	

TULIP-FLOWERED MAGNOLIA (*) *M. Soulangeana*

One of the most showy of the dwarfing-growing magnolias. Tulip-like flowers, white on the inside, pinkish on the outside. Very choice.

Limited selection of specimens available, please inquire.

STARRY MAGNOLIA (*) *M. stellata*

Pure white flowers in the early spring before the leaves. Deciduous. Blossoms star shaped, three inches or more in diameter. Very choice.

2 - 3 feet	\$ 5.00
a few larger specimens available.	

MOCK ORANGE, PHILADELPHUS CORONATUS

A fine deciduous, upright growing shrub. Profusely flowering with fragrant pure white blossoms. Recommended.

5 - 6 feet, heavy	\$ 4.00
6 - 8 feet, heavy	6.00

PAMPAS GRASS

The white plume variety, considered by many as the best form. The reed-foliaged graceful clumps have Ostrich-feather plumes in October. Some of the billowy and arresting spires rise to fifteen feet.

Two-year standard divisions	\$ 1.00
Two-year heavy divisions	2.00

PERNETTYA MUCRONATA (*)

A dwarf evergreen rock garden shrub with bright pink fleshy berries all winter. Spectacular and unusual when in berry. This choice shrub has been the hit of our exhibit at the Puyallup Fair every year. Compact, dense, slow growing. Ideal as a rock garden accent plant or as a small foundation shrub.

15 - 18 inches	\$ 2.00
18 - 24 inches	3.00
larger specimens available	

PHILADELPHUS, please see MOCK ORANGE

PHOTINIA SERRULATA (*) HOLLY-LEAVED PHOTINIA, CHINESE PHOTINIA

Compact, dense, broadleaved evergreen. Young leaves are red, older leaves are green, stems are red. Conspicuous white flowers in the spring, followed by black berries. One of the finest broadleaved evergreens ideal in a foundation planting or amongst other shrubs in a group. Recommended.

18 - 24 inches	\$ 3.00
----------------	---------

PIERIS JAPONICA (*) ANDROMEDA JAPONICA, LILY OF THE VALLEY BUSH

Low, slow growing, compact broadleaved evergreen. Beautiful striking Lily of the Valley like white flowers in the very early spring. Ideal for the rock garden or in shaded nooks. Admired by everyone.

15 - 18 inches	\$ 2.50
18 - 24 inches	3.50

PORTUGAL LAUREL, please see LAUREL

PRIVET

Species and forms of *LIGUSTRUM*CALIFORNIA GREEN PRIVET, *L. ovalifolium*

One of the most popular and inexpensive hedge and screen plants. Semi- to fully-evergreen in the Puget Sound region. Dark green softly-oval leaves. Rapid growing, can be clipped into any form. Excellant as a background plant when left to develop its own graceful habit of growth (untrimmed).

15 - 18 inches	\$.25
18 - 24 inches	.50
24 - 30 inches	.75
30 - 36 inches	1.00
Specially for hedges (wrapped 12 to a package):	
18 - 24 inches	\$ 5.00 per dozen

CALIFORNIA GOLDEN PRIVET, *L. ovalifolium* var. *variegatum*

An accent plant. Similar to the green form listed above except that the leaves are variegated with gold. Excellant for hedges, screens, or as background plants.

3 - 4 feet	\$ 2.00
4 - 5 feet	2.50
5 - 6 feet, heavy	3.00

DWARF CALIFORNIA GOLDEN PRIVET (*) *L. o.* var. *variegatum nanum*

NEW. There has finally been developed a form of the Cal. Golden Privet which combines the softness and beauty of the foliage with the intense gold color in a dwarf form. Ideal for rock gardens and low foundation plantings. Vase-shaped, semi-evergreen. Choice.

15 - 18 inches	\$ 1.50
----------------	---------

PYRACANTHA

PYRACANTHA "GOVERNMENT RED" (*) FIRETHORN

NEW. Everyone admires the blaze of red from the clusters of berries which are borne on the popular Firethorn plant. May be grown in a shrub form but more commonly seen climbing over a brick surface or trained along a trellis. Our NEW form has all the vigor and beauty of the dark green glossy leaves of the popular varieties, combined with rich maroon-red clusters of berries all winter. The most spectacular form of Firethorn we have ever seen. Choice.

2 - 3 feet	\$ 2.50
2 - 3 feet, heavy	3.50

RHODODENDRON

The following is only a partial list. We have many other kinds in too small quantities to warrant listing. New varieties will be arriving weekly throughout the spring, visit our nurseries and review our selection.

BRITTANIA (*)	Most popular bright red	\$ 7.50 up
BETTY WORMWALD (*)	Light purple blotch, pale pink center	\$ 7.00 up
BROUGHTONII AUREUM (*)	Splendid yellow (Azaleodendron)	\$ 7.00 up
FABIA (*)	Apricot orange, resplendent	\$ 7.50 up
LADY PRIMROSE (*)	Dazzling Primrose-yellow, RARE, dwarf	\$ 9.00 up
LORD ROBERTS (*)	Dark red with even darker spots. Specimens:	\$ 12.00 up
PINK PEARL (*)	Most popular giant pink	\$ 5.00 up
SAPPHO (*)	Choice white, heavily spotted	\$ 7.50 up
UNKNOWN WARRIOR (*)	Brilliant bright red	\$ 7.50 up
THOMSONII (*)	Outstanding blood red, compact, RARE	\$ 10.00 up
PONTICUM	Specie Rhododendron. Very popular, colors vary from from lavender to purple.	\$ 4.00 up

RHUS GLABRA (*) SMOOTH STAGHORN SUMAC

A fairly fast growing deciduous shrub. Liked for its staghorn-shaped clusters of red berries in the winter. Stout branches and fern-like leaves. Good for background plantings, or in groups with other deciduous shrubs.

3 - 4 feet

\$ 2.00

SPIREA ANTHONY WATERER (*)

A dwarf compact deciduous shrub with flat clusters of bright red flowers in the late summer. Showy when there are very few other plants in bloom. Fine in front of foundation plantings, in borders, or in groups of other flowering shrubs. Will not grow tall.

16 - 20 inches \$ 1.00

SPIREA THUNBERGI

An upright deciduous shrub bearing large clusters of small white flowers in the early spring. Graceful form, similar to Vanouttei. Fine for hedges, screens, or background plantings.

18 - 24 inches \$ 1.50
 2 - 3 feet 2.00
 3 - 4 feet 2.50
 4 - 5 feet 3.00
 larger specimens available

SUMAC, please see RHUS

UMBRELLA WILLOW, please see WILLOW in the SHADE TREE section

VERONICA CUPRESSOIDES, Hebe cupressoides, CYPRESS VERONICA

A rapid growing evergreen shrub with cypress-like foliage. Leaves are a powdery-gray, very fine texture.

12 - 16 inches \$ 1.50
 16 - 20 inches 2.00

VIBURNUM TINUS, please see LAURESTINUS

WEIGELA EVA RATHKE (*)

Bears colorful bright-red tube-like flowers. Outstanding and much admired when in flower, probably the best variety of Weigela. Compact, dense, and slow growing.

A few specimens available, please inquire.

YUCCA FILAMENTOSA, ADAMS-NEEDLE

Sword-like leaves arising from a common center, making the plant look unusually formidable. Most admired for its beautiful white flowers which are borne on a tall, straight, central fruiting-spire. A bold plant when not in flower, the accent plant of the garden when in flower.

3 year plants \$ 1.50

FLOWERING AND SHADE TREES

BIRCH

CUTLEAF WEEPING BIRCH (*)

Tall, slender-growing deciduous tree. Side branches weep. Unusual for its small, heavily indented leaves and outstanding white trunk. An accent tree, beautiful in clumps where the bark forms a bold pattern.

5 - 5 feet \$ 2.50

EUROPEAN WHITE BIRCH (*)

The ever-popular larger, fairly rapid growing lawn tree. Outstanding white bark and small leaves.

4 - 5 feet \$ 1.50
5 - 6 feet 2.00
6 - 8 feet 2.50
8 - 10 feet 3.50

HIAWATHA AMERICAN CANOE BIRCH (*) (x)

RARE ON THE PACIFIC COAST! Offered for the first time in the Pacific Northwest by us. The finest and most beautiful of all the birches. All birches have yellow autumn color but the Canoe Birch is the best because the bark is the whitest and the leaves are the largest. The trunk becomes spectacularly white all the way to the ground line, even in very old trees. Ideal lawn tree, in groups, or accent tree.

5 - 6 feet \$ 2.50

PLUMS • FLOWERING • CHERRIES

BLERIANA (*) Prunus bleriana

A small tree with masses of pink blossoms in the spring. Leaves are bright red all summer. Outstanding and choice.

5 - 6 feet \$ 3.50
6 - 8 feet 5.00
8 - 10 feet 6.50
10 - 12 feet heavy specimens 10.00

Flowering cherries con't:

FLOWERING CHERRIES, con't

KWANZAN FLOWERING CHERRY, *Prunus Kwanzan*

Slow growing deciduous tree. Outstanding for its large double pink blossoms in the spring. An ideal shade tree, arresting when in flower.

10 feet, heavy specimens \$ 15.00

PRUNUS LUSITANICA, please see LAUREL in FLOWERING SHRUBS section.

PRUNUS VESUVIUS (*)

Dark purple-red leaves all summer. This beautiful deciduous tree not only has the typical flowering cherry blossoms in the spring but also attention getting leaves all summer. Choice.

6 - 7 feet \$ 5.00

WEeping FLOWERING CHERRY, GRAFTED ON STANDARDS

A beautiful flowering dwarf tree grafted onto a straight trunk. Ideal near a pool. Never grows tall, instead the branches droop in a most interesting manner. Choice.

Specimens available only \$ 5.00 up

HOPA FLOWERING CRAB (*)

Beautiful red buds followed by a cascade of pink blossoms. Spectacular shade and accent tree. Choice.

5 - 6 feet \$ 2.50

PINK FLOWERING DOGWOOD (*) *Cornus florida rubra*

One of the most popular of all the slow growing flowering trees. Prolific flowering, rosy red bracts which are large, conspicuous. Leaves color up for fall. Recommended.

2 - 3 feet \$ 4.00

3 - 4 feet 5.00

larger specimens available

TATARIAN MAPLE (*) *Acer tataricum*

A dwarf maple, grows to about twenty feet. Has fine-textured, small leaves. Can be grown in a shrub-form. Foliage colors up to typical maple colors in the fall, ideal as a background shrub or tree. Offered for the first time this year. Unique.

3 - 4 feet \$ 1.50

PAUL'S SCARLET HAWTHORN

Considered by many as the best flowering hawthorn.

This beautiful tree has spectacular bright red flowers during the spring, outstanding. Does not grow large, ideal for the small property, in parking strips, or as a lawn tree. Choice.

4 - 5 feet (*)	\$ 1.75
5 - 6 feet (*)	2.25
8 - 10 feet specimens	10.00
10 - 12 feet specimens	15.00
12 - 14 feet specimens	20.00
14 - 16 feet specimens	25.00

PURPLE HAZLENUT TREE (*)

RARE. A small tree, covered with beautiful purple-red leaves all summer. A definite accent ornamental tree, ideal lawn, background, or parking strip tree. Choice.

5 - 6 feet	\$ 4.00
6 - 8 feet	5.50

HOLLY TREES, please see HOLLY in the FLOWERING SHRUBS section.

RED HORSECHESTNUT TREE (*)

This choice deciduous tree has red Hyacinth-shaped clusters of flowers covering it every spring. Compact growing with large dark green leaves, an accent tree. Recommended.

6 - 7 feet	\$ 6.00
10 - 12 feet	9.00

LARGE-FLOWERED TREE MAGNOLIA, please see MAGNOLIA in FLOWERING SHR.

MOUNTAIN ASH (*)

The beautiful compact, symmetrical slow growing flowering tree with the berries the birds love. Covered with large clusters of small red berries every fall. Slow growing, ideal lawn and parking strip tree. Choice.

3 - 4 feet	\$ 1.00
4 - 6 feet	2.50
10 - 12 feet, heavy	6.00
larger specimens available	

WEeping FLOWERING PEACH (*)

Grafted on four foot standards. Dwarf, the flower-laden branches almost scrape the lawn. Very choice, ideal for an oriental-type garden or near an informal pool.

Grafted on 4 foot standards	\$ 3.50
-----------------------------	---------

WILLOWS

BABYLONIAN WEeping WILLOW (*)

The ever-popular large growing, green-stemmed weeping willow. Grows into a beautiful lawn or shade tree, the long, graceful, weeping branches hang almost to the ground.

5 - 6 feet

‡ 2.00

CORKSCREW WILLOW

A horticultural oddity. Each twig twists and contorts itself upward. Slow growing, columnular, interesting.

12 - 15 feet, heavy specimens ‡ 15.00

UMBRELLA WILLOW (*)

Dwarf weeping French willows grafted on standards. Dense and compact, these well-grown specimens have the appearance of a fully-opened umbrella. Arresting. Ideal near a pool.

On 3 - 4 foot standards

‡ 15.00

On 4 - 5 foot standards

20.00

On 5 - 6 foot standards

30.00

SERVICES

FROM STRANDER'S

1. UNPARALLELED SELECTION OF CHOICE NURSERY STOCK.

We invite you to compare STRANDER-GROWN quality shrubs and trees with any obtainable. Review our complete selection, our newest introductions. A plant for every possible need.

2. LANDSCAPE ARCHITECTS SERVICES.

We are prepared to render a complete, lucid planting plan for any type installation. Please inquire concerning this money-saving service.

3. FREE GARDEN HANDBOOK WITH EVERY RETAIL ORDER.

Written exclusively for the Northwest. Complete and condensed. 32 fact-packed, fully illustrated pages.

4. GIFT CERTIFICATES.

Give a living gift, give a gift of beauty, give plants. These American Association of Nurserymen Gift Certificates are honored by more than 1,100 of the leading Nurserymen throughout the United States.

5. FREE DELIVERY SERVICE, please see enclosed YELLOW SHEET.

FRUITS (*)

SELECTED VARIETIES FOR THE PUGET SOUND

APPLES:

DELICIOUS, red, winter apple	4 - 5 feet	\$ 1.50
JONATHAN, red and yellow, winter, eating	4 - 5 feet	\$ 1.50
KING, yellow and red, fall, eat or cook	4 - 5 feet	\$ 1.50
GRAVENSTEIN, fall, eat or cook, popular	4 - 5 feet	\$ 1.50
YELLOW TRANSPARENT, summer, golden	4 - 5 feet	\$ 1.50

PEARS:

BARTLETT, golden, summer, eat or cook	5 - 6 feet	\$ 1.75
WINTER BARTLETT, winter, eat or cook	4 - 5 feet	\$ 1.75

CHERRIES:

BING, sweet, nearly black, choice	3 - 4 feet	\$ 1.25
ROYAL ANNE, yellow and red, canning	3 - 4 feet	\$ 1.25

PRUNES:

ITALIAN, dk. purple, eating, canning	4 - 5 feet	\$ 1.50
--------------------------------------	------------	---------

PLUMS:

YELLOW EGG, golden, sweet, eating	4 - 5 feet	\$ 1.50
-----------------------------------	------------	---------

PEACHES:

IMPROVED ROCHESTER, choice, eat, canning	6 - 8 feet	\$ 2.50
--	------------	---------

ESPALIERS

Selected specimens of the most popular fruit varieties. Grafted on dwarfing understock, carefully grown and trained. From \$ 5.00 up.

RASPBERRIES:

NEW WASHINGTON, NEW, red, choice	Dozen \$ 1.25
----------------------------------	---------------

GOOSEBERRIES:

OREGON CHAMPION, vigorous, early ripening	2-year 50¢ each
---	-----------------

We also have a limited selection of BEARING SIZE fruit trees. Please inquire.

STRANDER EVERGREEN NURSERIES

Please see the enclosed YELLOW SHEET for ordering instructions, information concerning our FREE DELIVERY SERVICE, our guarantee, etc.

IRIS

The RAINBOW FLOWER, in varieties and colors to delight the most exacting gardener.

Iris are priced per heavy rhizome. No orders less than \$1.00

GLACIER BLUE NO. 2

NEW FOR 1948. One of the most beautiful light Caribbean-blue bearded irises we have ever seen. Giant flowers, vigorous bloomer. Brings a ray of heavenly-blue starlight into the garden, its feerique appearance is raved about by everyone who sees it. Very choice. A THOLE hybrid.

Per rhizome \$ 10.00

TALL BEARDED

AFTERGLOW, light yellow self, blended with blue and red	\$.35
AMBASSADEUR, dark red and purple bicolor	.35
BLUE MONARCH, large medium blue self, choice	.40
CANYON GLOW, broad spreading flower of bronze red, brilliant	1.50
CHIEF SEATTLE, medium pink to copper-red blend, fragrant	3.00
CHINA MAID, soft lilac pink, choice	.65
CITY OF LINCOLN, brilliant variegata, yellow st., red falls	1.00
DAUNTLESS, large velvety red	.35
DEPUTE NOBLOP, copper red standards, wine red falls	.50
FRIEDA MOHA, giant pink	.35
GRAND CANYON, plum, copper, and gold blend. Striking	1.50
GREAT LAKES, wonderful pure light blue	1.00
INDIAN CHIEF, medium red self	.35
JEAN CAYEUX, coffeecolored Havana brown, popular	.50
LENT A. WILLIAMSON, dark purple-yellow blend	.35
MAGNIFICA, light blend bicolor, unusual	.35

Iris con't

TALL BEARDED IRIS, con't:

MATTARHORN, giant pure white, beautiful with shrubs	\$ 1.00
MME. CHERI, light pink	.35
MME. GAUDICHAU, dark blue bicolor	.35
MODISTE, beautiful light lavender blue	.50
MT. ROYAL, giant royal purple	.35
MORNING SPLENDOR, dark red self	.35
NOONTIDE, clear yellow self, overlay of gold	.75
PERSIA, pretty combination of light and dark purple	.35
PURPLE LAKE, dark copper-red bicolor	.85
RAMESES, light red blend bicolor	.35
RHEINGAUPELL, light pink blend	.35
ROSARIO, light copper pink self	.50
ROSE DONÉ, dark copper red bicolor	.75
ROYAL BEAUTY, large fine purple	.35
SACHEM, medium red-toned bicolor	.35
SATSUMA, giant buff tan	.75
SEDUCTION, large creamy white, stitched with lilac, distinct	.50
SENSATION, medium blue self	.35
SUN GLOW, white, yellow-toned self	.50
THAIS, dainty pink self	.35
TIFFANY, creamy yellow plicata, rose stitching	.50
TOKEN, standards: gold and rose, falls: rosy brown-red	.75
TRAIL'S END, medium red-toned blend	.35
TRUE DELIGHT, white, stitched with pink	.35
WABASH, standards: white, falls: deep violet blue	.75
W. C. JONES, light yellow	.35
WINTER MOON, fine bluish white	.50

ORIENTAL

Hybrids of Iris KAEMPFERI

All priced at 35¢ each, one each of
all six varieties for \$ 1.50.

Colors vary from light to dark in reds
and purples.

FUROMON	JUNI	SHIRAKI-NO-ISCARI
HO-O-JO	OKI-NO-SHIRAHI	WHITE

DWARF IRIS

These bloom much earlier than
the tall bearded. Giant flowers
on tiny three or four inch stems.
Beautiful for edging. The rhizomes
are small, sold three rhizomes of
any variety for 35¢. Any six \$ 1.50

JEAN SIRET, lt yellow	SUSA, dk red	
PAPCOSE, copper tan	RED VIOLET	
PALTEC, lt blue	WHITE	PURPLE

INTERMEDIATES

Taller than the dwarf, shorter than
the tall bearded. Blooms between the
dwarf and the tall. 35¢

ELEANOR ROOSEVELT, dark purple
PEGGY BABINGTON, yellow self

SPECIES

Unusual, little known forms of
Iris. 50¢ each.

SIBERIAN: 2 forms: dark blue; Perry's Blue (medium blue)

OCHROLEUCA, light yellow self

AUREA, tall yellow PSEUDACONUS, yellow

PALLIDA DALMATICA FOLIUS VARIEGATA, leaves stripped with white,
dwarf growing, flowers small and purple.

CANDYTUFT, Iberis

A beautiful low compact perennial, covered with charming white flowers. Ideal in rock gardens, or as an edging plant.

Heavy divisions \$ 1.00

CHRISTMAS ROSE (*) Helleborus niger

Low, compact perennial. Outstanding because it bears large, rose-like white flowers in January and February. One of the only plants to blossom at this time. Choice.

Heavy divisions \$ 2.00

PHLOX, AGLARON-RED

A variety of garden Phlox with arresting rose-red blossoms in the summer. When in flower this plant will be the focal point of the garden.

Heavy divisions \$ 1.00

PAMPAS GRASS, please see the FLOWERING SHRUBS section

YUCCA, please see the FLOWERING SHRUBS section

TABLE OF CONTENTS

CONIFERS, cone-bearing, needle-leaved evergreens Pages 2 - 15
Abies, Arborvitae, Araucaria, Cedrus, Cryptomeria, Cypress, Juniper, Monkey Trees, Pines, Retinospora, Spruce, Thuja, Thujopsis, Yew, etc.

VINES AND GROWDCOVERS Page 16
Bittersweet, Honeysuckle, Wisteria, etc.

FLOWERING SHRUBS Pages 17 - 29
Abelia, Aucuba, Azalea, Barberry, Boxwood, Camellia, Cotoneaster, Daphne, Euonymus, Heather, Holly, Laurel, Magnolia, Mock Orange, Pernettya, Photinia, Pieris, Privet, Pyracantha, Rhododendron, Spirea, Veronica, Yucca, etc.

FLOWERING AND SHADE TREES Pages 30 - 33
Birch, Flowering Plums and Cherris, Dogwood, Maple, Hawthorn, Mountain Ash, Willows, etc.

FRUITS Page 34

IRIS, Tall bearded, Intermediate, Dwarf, Species Pages 35 - 37

IMPORTANT

ORDERING INSTRUCTIONS

TERMS:

Cash. Orders which are to be delivered by common carrier must be paid for in full before leaving the nursery.

Orders which are delivered by our own trucks (free delivery service) may be paid for when delivered.

Orders which are to be delivered or called for in the remote future must be accompanied with a 25% deposit. In no event will stock be held from one season to the next, unless otherwise agreed.

Stock picked up at the nursery must be paid for in full at the time the customer takes delivery.

SALES TAX:

Washington customers will please add 3% sales tax.

FREE DELIVERY SERVICE

All orders for \$25.00 or more will be delivered free of charge to any address within a radius of 15 miles from the nursery. (Approximately from the North City Limits of Seattle to the Pierce County line.) Larger orders will be delivered a greater distance, please inquire.

If at all possible we suggest you take advantage of this service. Your shrubs will arrive in much better condition if they have been handled by experts ALL THE WAY. Careless handling during shipment will often damage the stock.

SHIPPING:

We will ship any plant listed in this catalog to any address within the continental boundaries of the United States.

We will ship by any method the customer wishes, although we suggest railway express or freight for long distance shipments and auto freight for nearby addresses.

All prices listed in this catalog are F.O.B. the nursery, there are no exceptions.

Transportation charges may be paid in advance or upon delivery.

(con't on next page)

ORDERING INSTRUCTIONS

VISITING THE NURSERIES:

Our nurseries are located at 13310 Interurban Ave. So., Seattle 88. This is on the Old Kent-Auburn Valley Highway at Foster. Two miles north of Longacres, two miles south of Boeing field. Take the North Coast Lines bus at 8th and Stewart, Seattle, buy a ticket for "Foster."

We are open every day of the week, including Sundays, during the planting season. Visitors and browsers are always welcome.

CUSTOMERS SELECTION OF SHRUBS:

Pieces selected by the customer at our nurseries will be charged for according to the value of the plant chosen, regardless of the catalog price.

PACKING:

Where special packing is necessary for shipping the customer agrees to pay costs. No special packing is necessary for plants delivered by our own trucks.

Deciduous shrubs and trees in a dormant condition are dug bare root, then wrapped carefully and securely with burlap squares.

Evergreen shrubs are always dug with a ball of earth surrounding the roots, then wrapped carefully and securely in burlap squares.

GUARANTEE

STRANDER EVERGREEN NURSERIES guarantees all stock purchased from us to be healthy, true to name and size as specified, and in a vigorous condition. All our plants are regularly inspected by the State of Washington Department of Agriculture, Division of Horticulture. Every order of STRANDER nursery stock shipped out of the State of Washington carries an INSPECTION CERTIFICATE.

Due to the fact that we are unable to control the environment to which sold and delivered materials will be subjected we can take no responsibility for crop failure. We are not responsible for acts of God or maltreatment after the plants leave our nurseries.

All claims must be filed at our office within fourteen days after delivery.

In no event shall we be liable for any refund greater than the purchase price of the stock.

INSTRUCTIONS ON THE CARE OF THE PLANTS:

We always include, free of charge, one copy of our "Maintenance Manual" with every retail order. This complete, condensed handbook gives all the details in the care of plants bought from us. (This book may be purchased separately for 25¢, postpaid)

STRANDER EVERGREEN NURSERIES PRESENT:

NEW PLANTS FOR 1948

OFFERED FOR THE FIRST TIME THIS SEASON,
ALL ARE NEW TO THE PACIFIC NORTHWEST,
MANY ARE OUR OWN ORIGINATIONS!

GLACIER BLUE NO. 2, a wonderful new light Caribbean-blue garden Iris. Giant flowers. Offered for the first time this year, by STRANDER'S. See Page 35.

STRANDER'S COMPACTA FASTIGIATA SPECIMEN STRAIN IRISH JUNIPER
Originated in our own nurseries. More compact, more dense, slower growing, more beautiful than the "regular" Irish Juniper. Guaranteed superior in every way. See page 7.

STRANDER'S SELECTED NANA COMPACTA STRAIN MUGHO PINE
SUPER DWARF. Grows like a living pin-cushion. Hardy, tough, one of the finest rock garden plants. Originated in our nurseries. See page 10.

STRANDER'S DWARF GOLD RETINOSPORA
A very dwarf, golden-colored evergreen. Grows into a tiny feathery, globe-shaped plant. Originated at our nurseries. See page 11.

STRANDER'S SILVER-TIP IRISH YEW
Originated at our nurseries. Upright, slow-growing, bushy evergreen with beautiful silver-tipped foliage. Outstanding. See page 15

DIEL'S COTONEASTER
RARE. Offered for the first time in the Pacific Northwest. Oblong-pointed leaves to one inch long, pinkish-white blossoms in the spring, fire-red berries. See page 20.

EUONIMUS MAACKII
RARE. Offered for the first time in the Pacific Northwest. One of the most graceful and lush-looking of all garden plants. See page 22.

DWARF CALIFORNIA GOLDEN PRIVET
NEW. A rock garden form of the famous Golden Privet. Dwarf, trailing, golden-yellow colored. See Page 27

GOVERNMENT RED FIRETHORN.
NEW. The most spectacular Pyracantha we have ever seen. Arresting maroon-Red clusters of berries. See Page 27

HTAWATHA AMERICAN CANOE BIRCH
NEW TO THE PACIFIC NORTHWEST. The birch with the whitest trunk and the largest, most outstanding Golden-Autumn-Colored leaves. Superior. See page 30

COMPLETE TABLE OF CONTENTS ON PAGE 38.